

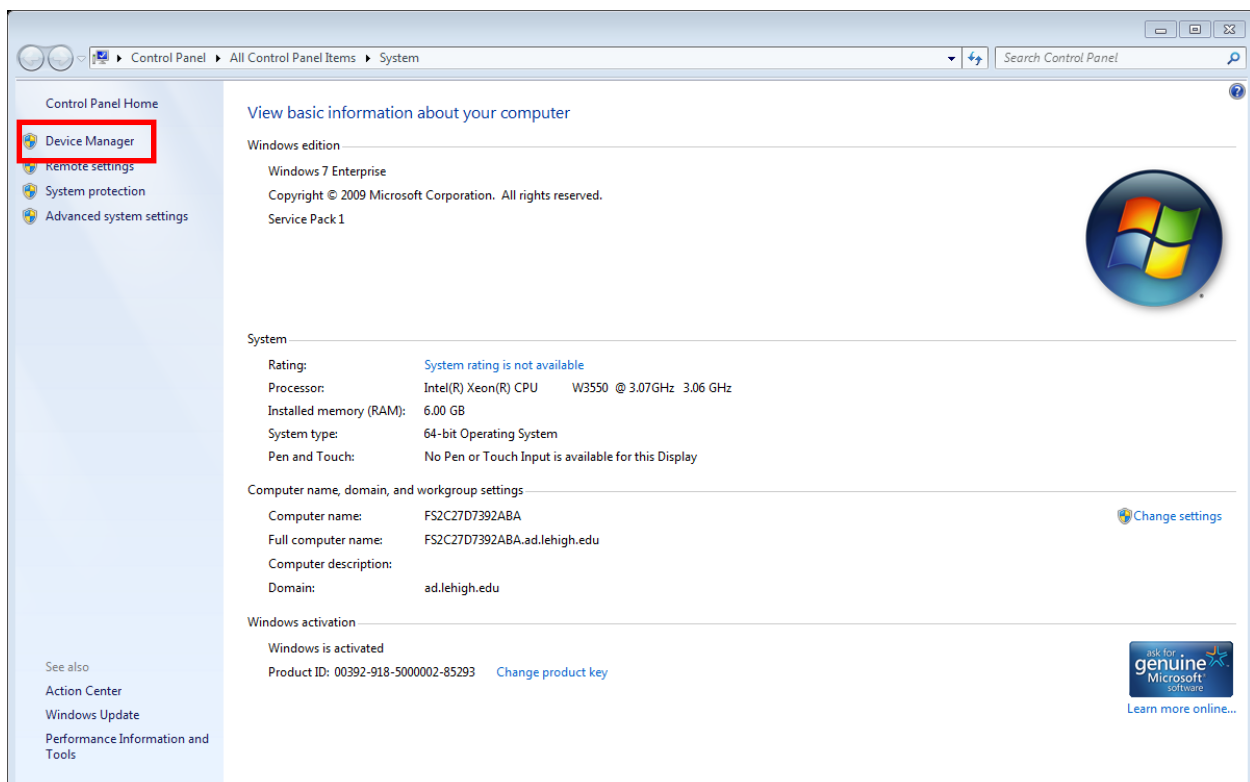
Giancarlo Paternoster Understanding COM ports

Every computer comes pre-set with a COM port with which it can communicate. In our case we are trying to use PUTTY to examine serial signals output by the computer. PUTTY needs to know which COM port to send the information to. So, even though the example in the slide show might say, "Connect to COM1," this might not be the correct COM for your machine. Use the following steps to identify the COM port your particular machine communicates from.

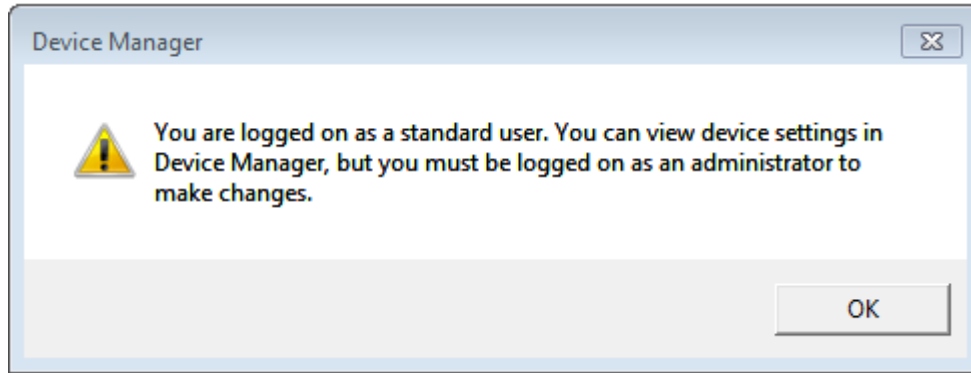
1. Right click on the Computer Icon on the Desktop



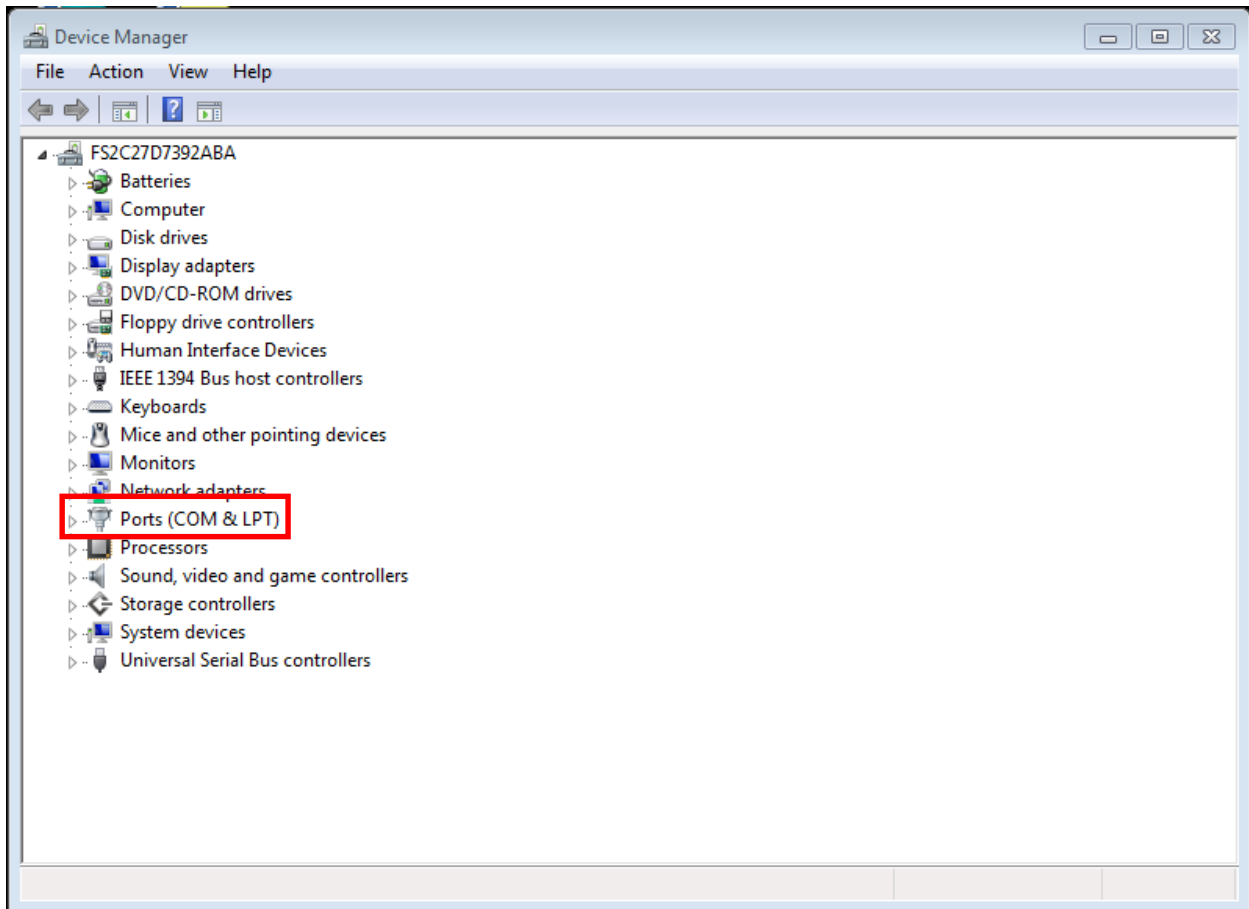
2. Select "Properties" from the menu that pops up
3. Left click on "Device Manager" on the left hand "Control Panel Home" Tool Bar



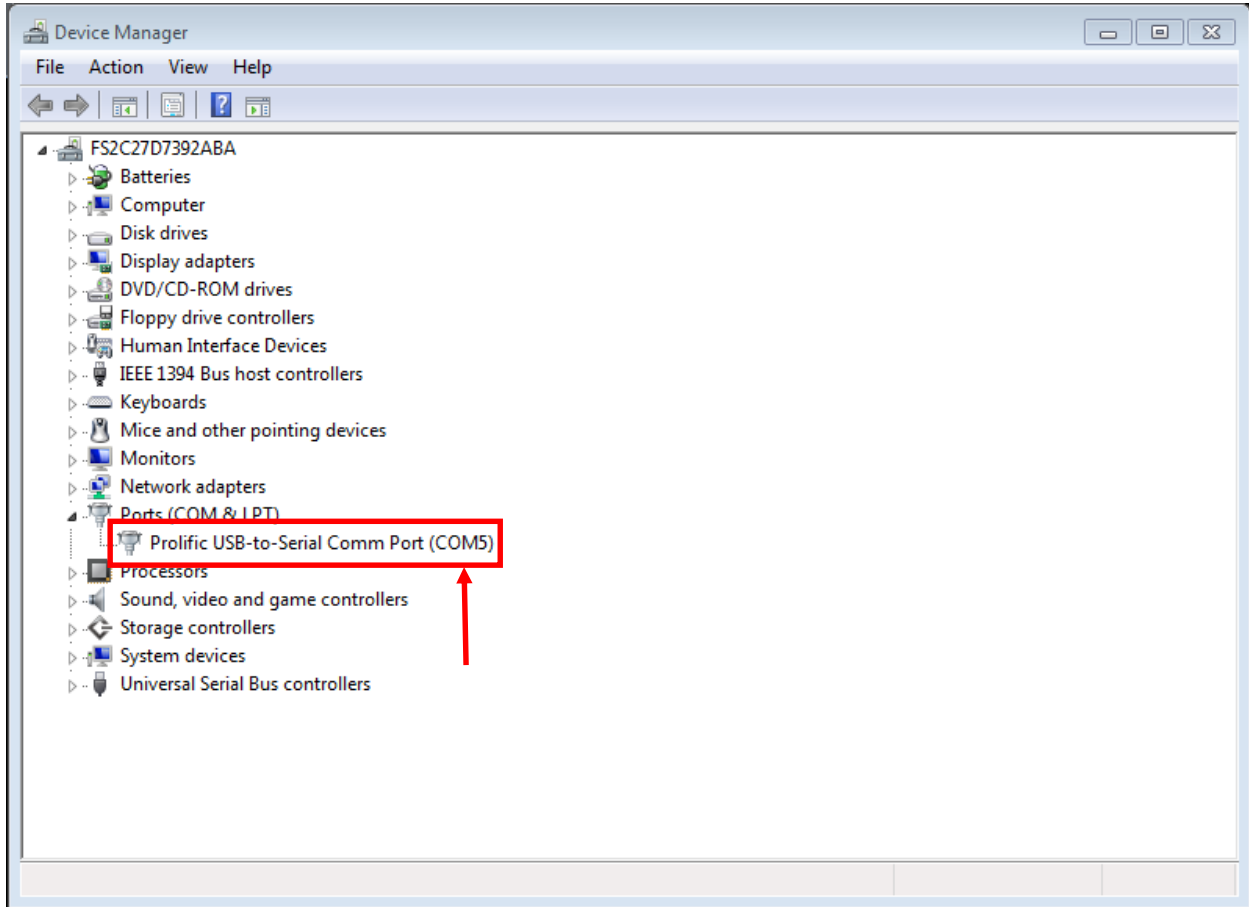
4. Select "OK" on the menu that pops up – we are simply viewing settings, not changing anything



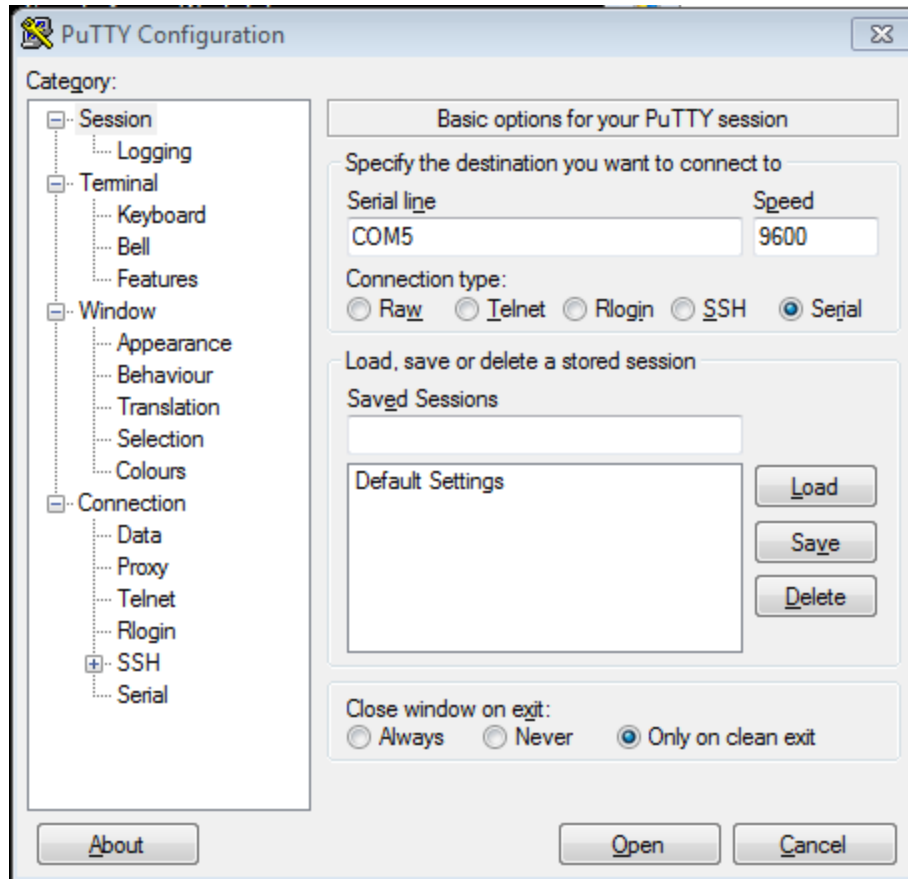
5. Select "Ports (COM & LPT)" from the menu



6. Select "Prolific USB-to-Serial Comm Port (COM#)" *the "#" is replaced with the port number your computer communicates with. Ex. "(COM5)"



7. Change your PuTTY Configuration Page to look like the example



8. Click "Open" to launch the PuTTY Terminal

